

THE FOOD CHAIN

Sources of All Food and Groceries

PRIVATE SECTOR

PUBLIC SECTOR

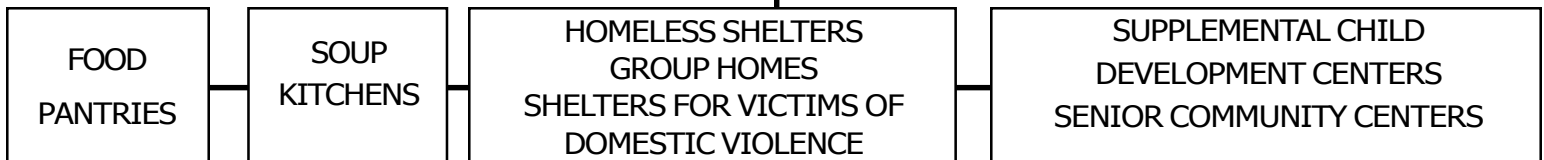


Collected and Distributed by

12 SECOND HARVEST FOODBANKS SERVING ALL 88 COUNTIES
SOLICIT/COLLECT/SORT/PROCURE/STORE/DISTRIBUTE
81.6 MILLION POUNDS IN 2002

Recipient Agencies

3,000 PLUS MEMBER CHARITIES
ALL ARE NON-PROFIT AND OVER 67% ARE FAITH BASED ORGANIZATIONS

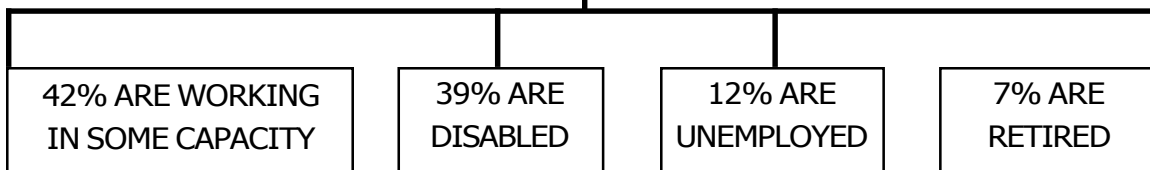


Populations Served

HUNGRY OHIOANS
1.9 MILLION HOUSEHOLDS SERVED IN 2002
AVERAGE MONTHLY INCOME OF \$645.90 OR \$7,858.82 YEARLY FOR A FAMILY OF 3



50% ARE ADULTS 18 TO 59



SOURCE, TYPE, AND RESOURCES OF FOOD AND GROCERIES DISTRIBUTED

PRIVATE SECTOR

PUBLIC SECTOR

INDUSTRY & MANUFACTURERS	RETAIL & RESCUE	LOCAL FOOD PURCHASE PROGRAMS & FUNDRAISERS	STATE DOLLARS OFP/OASPA OHIO ASSOCIATION OF SECOND HARVEST FOODBANKS WITH ODJFS OVERSITE	USDA SURPLUS & ENTITLEMENT COMMODITIES ODJFS CONTRACT WITH FOODBANKS
TEST MARKET INDUSTRY MISTAKES EXCESSIVE INVENTORIES EXPIRED PRODUCT CLOSEOUTS	GROCERY STORES RESTAURANTS/ CATERING STORE/ WAREHOUSE DAMAGED DONATIONS GLEANING/ COMMUNITY GARDENING CORRECTIONS/ FARM OPERATIONS	COMMUNITY & WORKPLACE FOOD DRIVES SCHOOL, CIVIC, & SOCIAL FOOD & FUND DRIVES GRANTS FUNDRAISERS PURCHASE PROGRAMS	OASHF IDENTIFIES NEEDS AND FILLS THE GAPS SHELF STABLE ITEMS SURPLUS OHIO GROWN & RAISED PRODUCTS (FRUITS, VEGETABLES, PROTEIN) ALL SHIPPED DIRECTLY TO 12 SECOND HARVEST FOODBANKS SFY 2002 12.2 MILLION POUNDS SFY 2003 11.2 MILLION POUNDS	ODJFS ACCEPTS OFFERS AND FOODBANKS DISTRIBUTES IT UNKNOWN MARKET DRIVEN ENTITLEMENT FOODS STORAGE & DISTRIBUTION BONUS COMMODITIES SFY 2002 30.8 MILLION POUNDS SFY 2003 17.1 MILL POUNDS

PRIVATE SECTOR DONATIONS

PUBLIC SECTOR PURCHASES

<p>FOOD AND NON-FOOD ITEMS</p> <p>UNKNOWN QUANTITIES AND MIXED PRODUCTS</p> <p>SNACK FOODS CANDY COOKIES CONDIMENTS CEREAL SOAPS/DETERGENTS SHAMPOO TOOTH PASTE COSMETICS OVER THE COUNTER MEDICATIONS FIRST AID PRODUCTS PAPER PRODUCTS TOILET/TISSUE PAPER CHILD/ADULT DIAPERS DENTED CANS BROKEN/OPEN PACKAGES PERISHABLE MEAT/DAIRY PRODUCTS</p> <p>CRUSHED/BROKEN FROZEN MEALS MIXED PRODUCT REJECTED LOADS REPACK OF BULK DONATIONS COMMUNITY GARDENS PRISON FARM PRODUCTS FOOD DONATIONS/ COLLECTIONS BAKE SALES COOK-OFFS FUNDRAISERS GOLF OUTINGS DINNER EVENTS FOUNDATION & CORPORATE FUNDED DONATIONS LOCAL PURCHASES OF FOOD AND PERSONAL/HOUSEHOLD CARE PRODUCTS</p>	<p>OFF FOODS</p> <p>APPLESAUCE TURKEY SAUSAGE TUNA CEREAL CHILI CORN PASTA SOUPS RAVIOLI MAC & CHEESE CANNED FRUIT PORK & BEANS SPAGHETTI SAUCE BEEF STEW</p> <p>OASPA FOODS</p> <p>APPLES BEANS CABBAGE PEARS CHICKEN CUCUMBERS EGGPLANT EGGS GREENS LETTUCE MELONS CANTALOUPE WATERMELONS</p> <p>ONIONS PEACHES PEPPERS PLUMS POTATOES RADISHES SPINACH SQUASH CORN TOMATOES ZUCCHINI</p>	<p>UNKNOWN FOODS</p> <p>MARKET DRIVEN</p> <p>CANNED APRICOTS & POTATOES</p> <p>DRIED PINTO BEANS</p> <p>EVAPORATED MILK</p> <p>INSTANT/ FREEZE-DRIED POTATOES</p> <p>TRAIL MIX</p> <p>WALNUTS</p> <p>ROASTED ALMONDS</p> <p>DRIED CRANBERRIES</p> <p>FROZEN BLUEBERRIES</p> <p>RAISINS</p> <p>RICE</p> <p>CRANBERRY & APPLE JUICE CONCENTRATES</p>
---	---	--